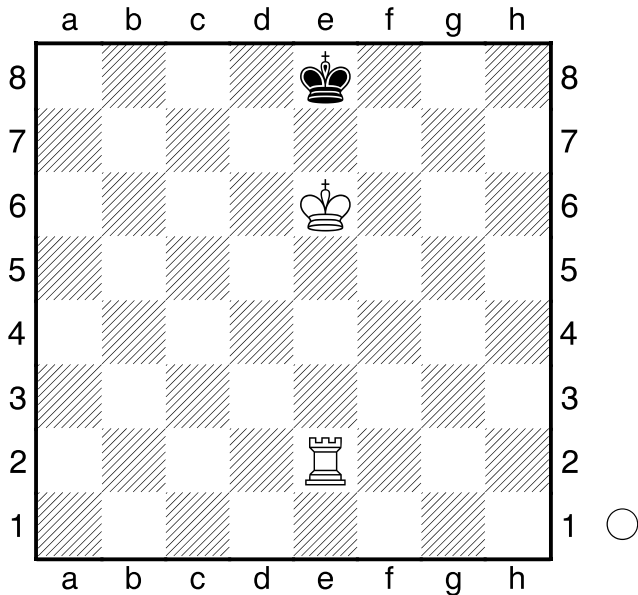


□ Endgame 010

■ The Any-Rook Move Mate

Pandolfini's Endgame Course



1.Re5

[1.Rd2 Kf8 2.Rg2 Ke8 3.Rg8#]

1...Kd8

[1...Kf8 2.Rg5 Ke8 3.Rg8#]

[1...Kf8 2.Rg5 Ke8 3.Rg8#]

2.Rc5 Ke8 3.Rc8#

1-0

□ Endgame 011

■ Closing the Net

Pandolfini's Endgame Course

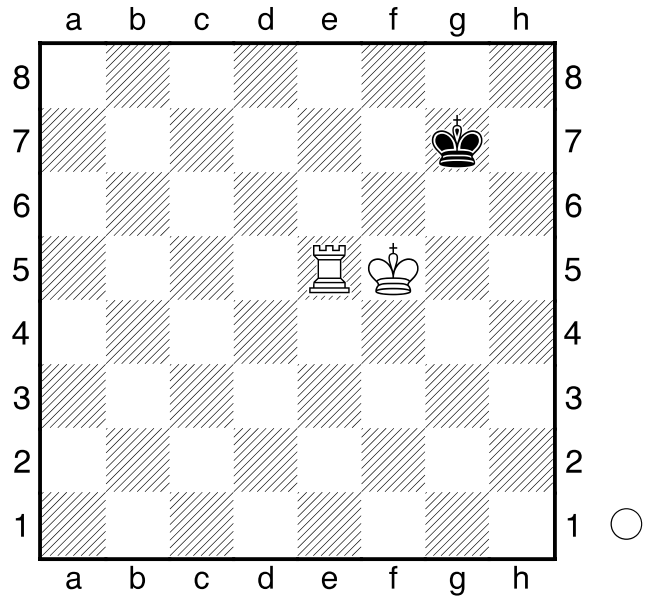
(Diagram)

1.Re7+ Kf8

[1...Kh6 2.Rf7 Kh5 3.Rh7#]

2.Kf6 Kg8 3.Kg6 Kf8 4.Re6 Kg8 5.Re8#

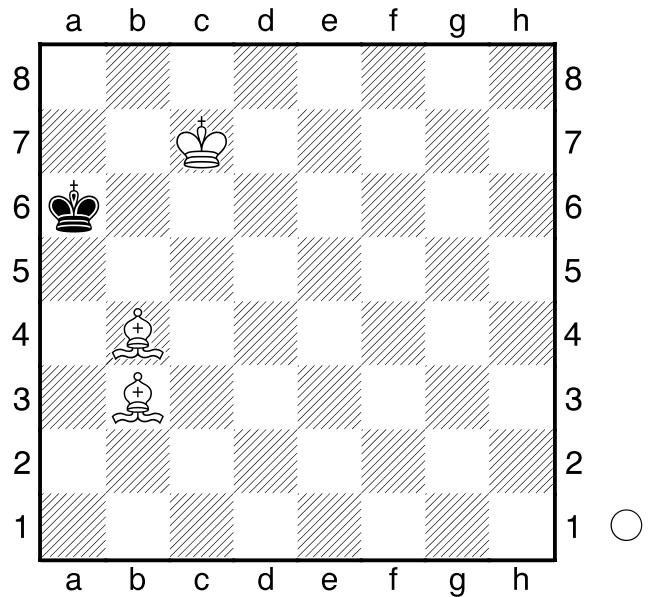
1-0



□ Endgame 012

■ The Bishop Roll

Pandolfini's Endgame Course



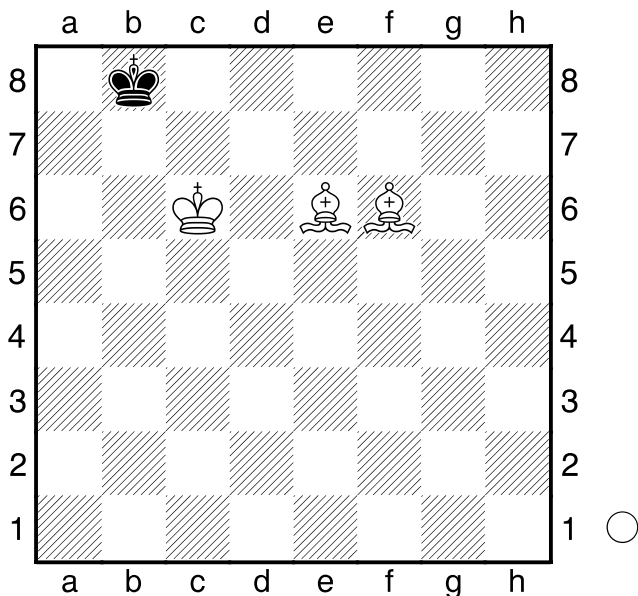
1.Bc4+ Ka7 2.Bc5+ Ka8 3.Bd5#

1-0

□ Endgame 013

■ Positioning the King

Pandolfini's Endgame Course



1.Kb6 Ka8 2.Be7 Kb8 3.Bd6+ Ka8 4.Bd5#
1-0

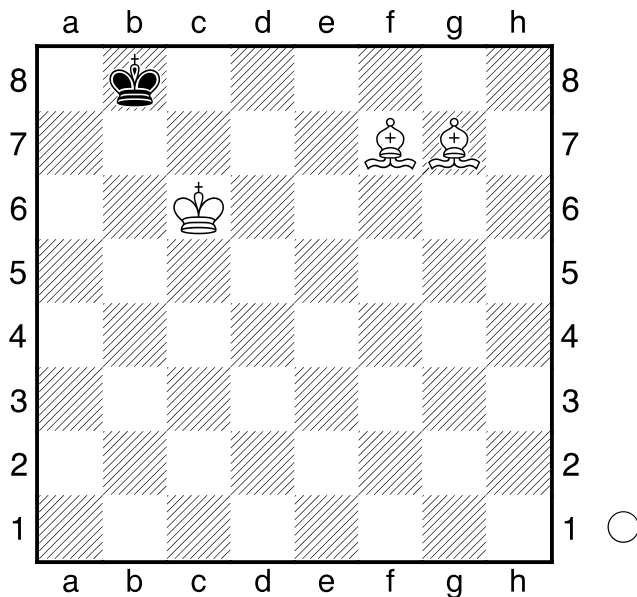
□ Endgame 014

■ Closing the Door

Pandolfini's Endgame Course

(Diagram)

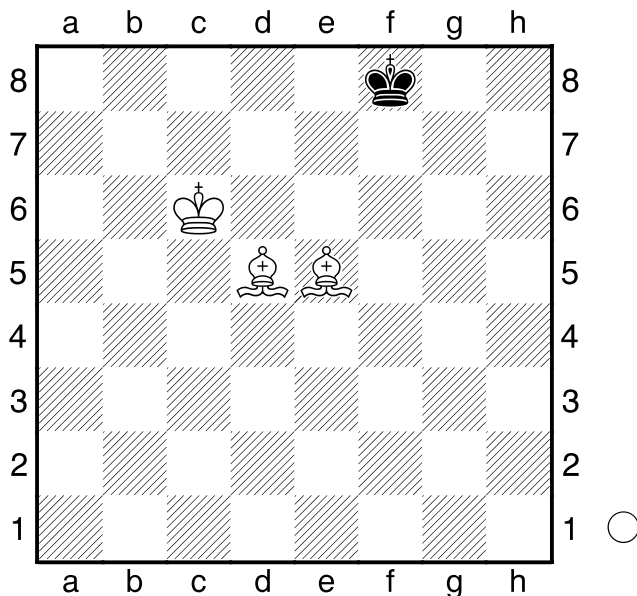
1.Bd4 Kc8 2.Bf6 Kb8 3.Kb6 Kc8 4.Be6+
Kb8 5.Be5+ Ka8 6.Bd5#
1-0



□ Endgame 015

■ Taking Away Squares

Pandolfini's Endgame Course



1.Kd6 Ke8 2.Bg7 Kd8 3.Bf7 Kc8 4.Kc6 Kd8
5.Bf6+ Kc8 6.Be6+ Kb8 7.Kb6 Ka8 8.Be7
Kb8 9.Bd6+ Ka8 10.Bd5#
1-0