

D41

☐ Tal,M  
 ■ Milev,Z  
 Munich

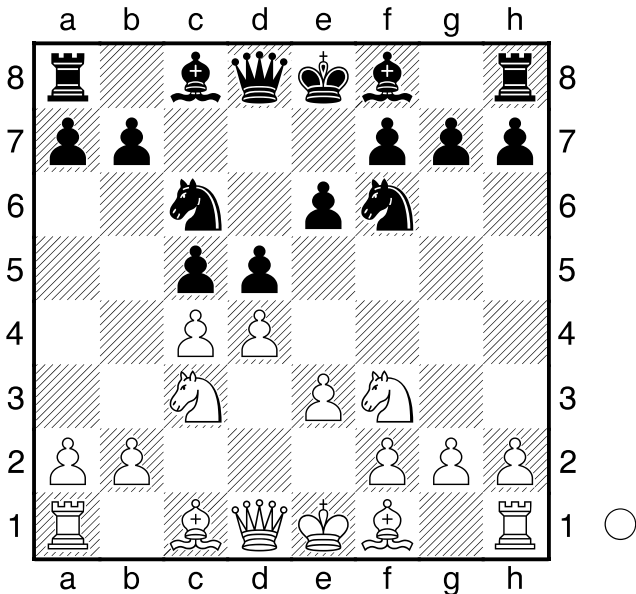
1958

D41: Queen's Gambit Declined: Semi-Tarrasch with 5 cxd5

1.c4

[ 1.d4 d5 2.c4 e6 3.Nc3 c5 ( 3...Nf6 4.Nf3 c5 5.e3 Nc6 ) 4.cxd5 exd5 5.Nf3 Nf6 6.g3 Nc6 7.Bg2 Be7 8.0-0 0-0 9.Bg5 cxd4 10.Nxd4 ]

1...c5 2.Nc3 Nc6 3.Nf3 Nf6 4.e3 e6 5.d4 d5 Diagram



6.cxd5 Nxd5 7.Bc4

[ 7.Bd3 cxd4 8.Nxd4 Nxc3 9.bxc3 Ne5 10.Be2 ]

7...Nb6 8.Bb5 a6 9.Bxc6+ bxc6 10.0-0 Bb7 11.Ne4 Diagram

(Diagram)

Nd7 12.Qc2 Qb6 13.Ne5 cxd4 14.Nxd7 Diagram

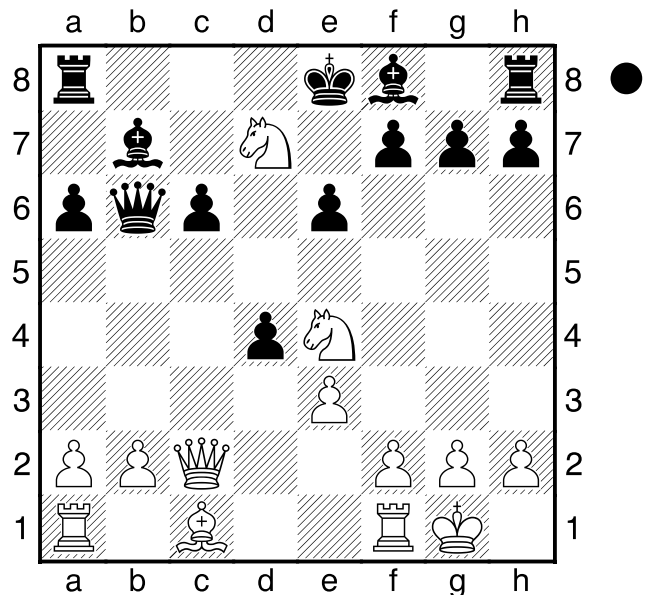
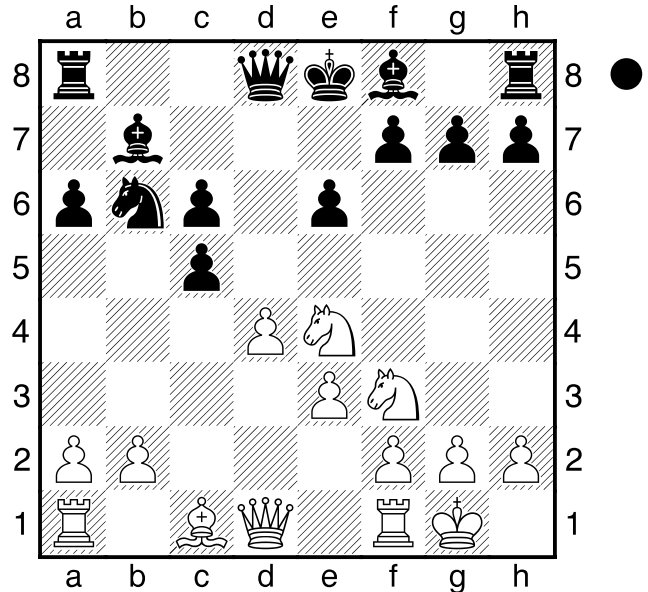
(Diagram)

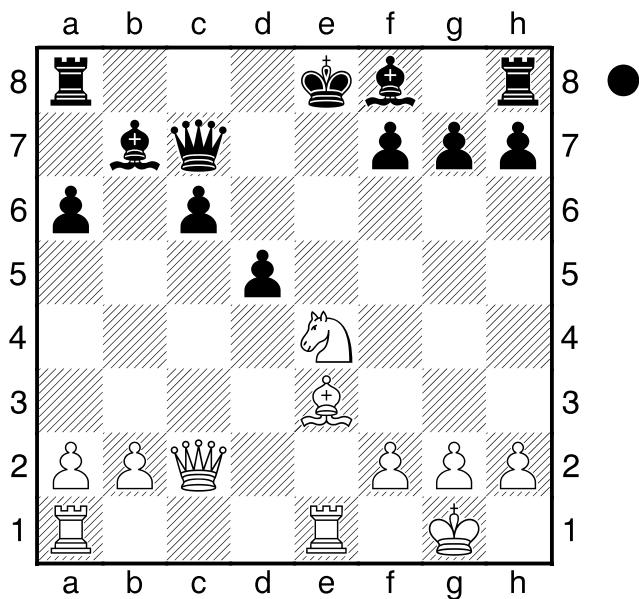
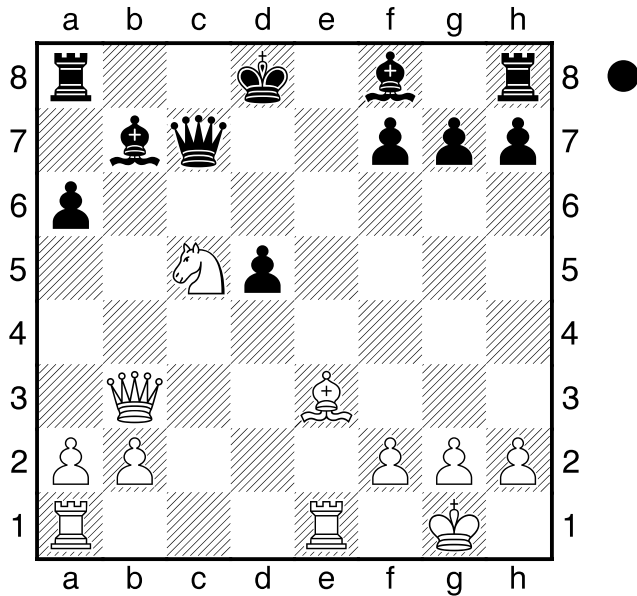
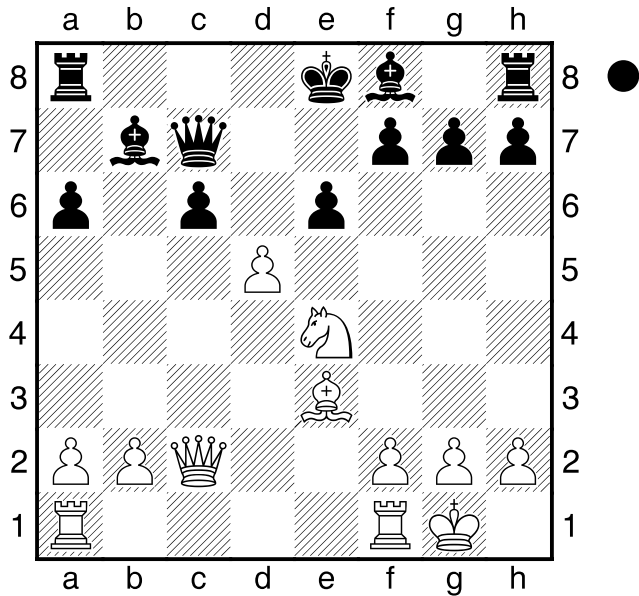
Kxd7 15.exd4 Ke8 16.Be3 Qc7 17.d5 Diagram

exd5 18.Rfe1 Diagram

Kd8

[ 18...dxe4 19.Qxe4+ Qe7 ( 19...Be7





20.Bc5 ) 20.Qc4 Rd8 21.Bc5 ]  
**19.Qb3**  
 [ Δ19.Nc5! ? and White can already relax Bc8  
 20.Bd4+- ]  
**19...c5??** sad, but how else could Black save  
 the game?  
 [ Δ19...Kc8 20.Nc3 Bd6+- ]  
**20.Nxc5!!** Diagram  
 [ 20.Nxc5 Bc6 21.Ne6+ fxe6 22.Bb6+- ]  
 the crowning sacrifice. . . . . **20...Bxc5**  
**21.Bxc5 Qxc5 22.Qxb7 Rc8 23.Rac1 Qxc1**  
**24.Qe7#**  
**1-0**