

B30

☐ Fischer, Robert James

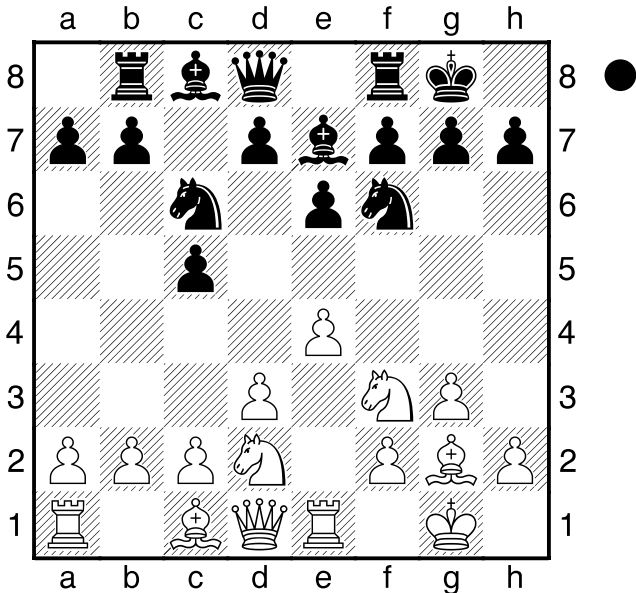
■ Sherwin, James T

East Orange (7)

1957

[Deep Fritz 8 (15s)]

B30: Sicilian: 2...Nc6 3 Bb5, lines without ...g6
1.e4 c5 2.Nf3 e6 3.d3 Nc6 4.g3 Nf6 5.Bg2
Be7 6.0-0 0-0 7.Nbd2 Rb8 8.Re1 Diagram



d6 9.c3 b6 10.d4 Qc7 11.e5 Diagram

(Diagram)

White gains space **Nd5**

[11...dxe5!? is noteworthy 12.dxe5 Nd5=]

12.exd6

[12.c4!? Ndb4 13.exd6 Qxd6 14.Ne4+-]

12...Bxd6± 13.Ne4 c4 14.Nxd6 Qxd6

15.Ng5 Nce7

[15...h6 16.Ne4 Qc7 17.Qe2±]

16.Qc2 Ng6 17.h4 Nf6 Diagram

[17...f5!?±]

(Diagram)

18.Nxh7!+- Demolishes the pawn shield **Nxh7**

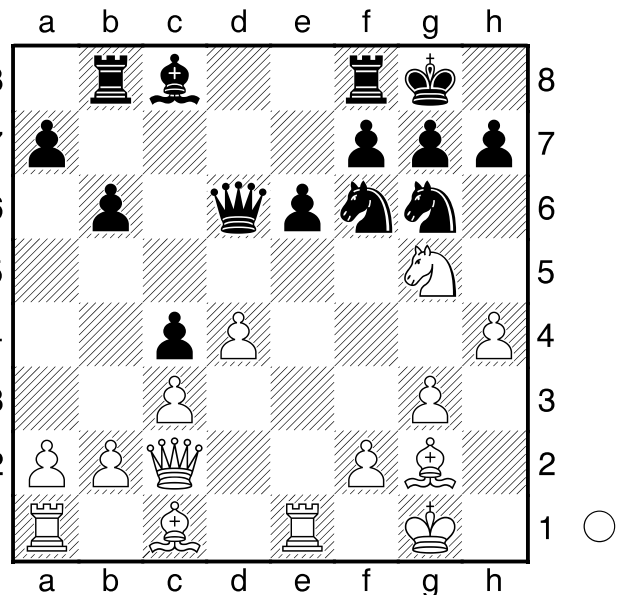
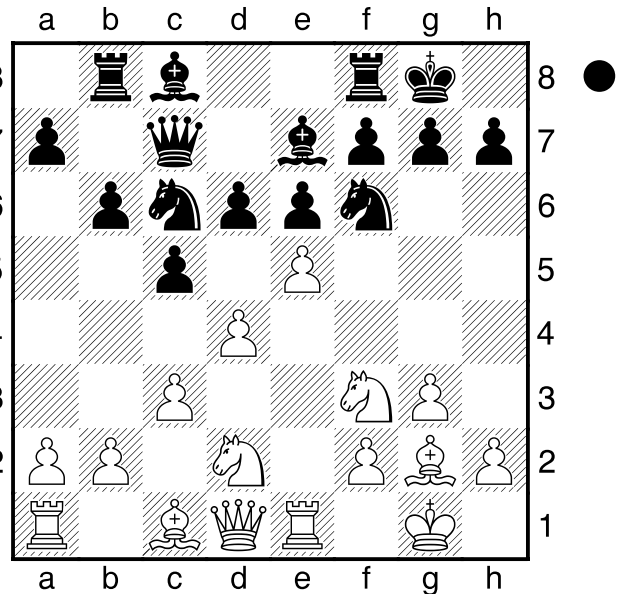
A deflection

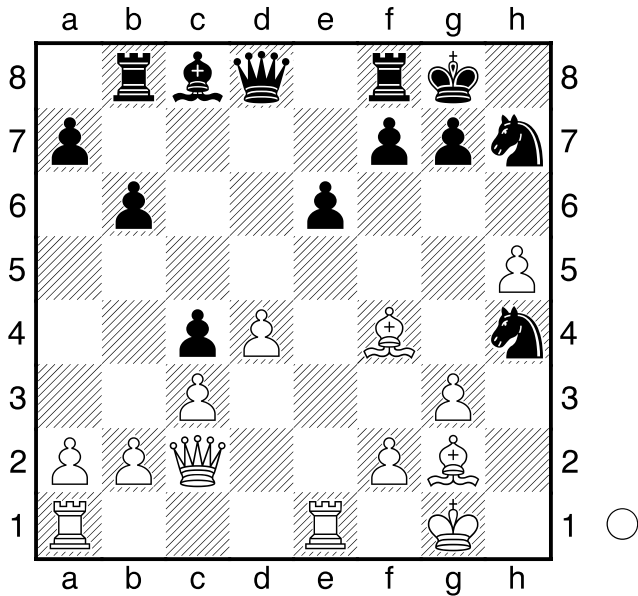
[18...Kxh7 19.Bf4]

19.h5 Nh4 20.Bf4 Qd8 Diagram

21.gxh4

[21.Bxb8 is no comparison Nxg2 22.Kxg2





Bb7+ 23.f3 Qxb8+]
21...Rb7 22.h6 Qxh4 23.hxg7 Kxg7
 [23...Rd8 24.Bg3 Qg5+-]
24.Re4 Qh5
 [24...Qe7 25.Re3 Kh8 26.Rh3+-
 (26.Bxb7?! Bxb7 27.Rh3 Rg8+ 28.Bg3
 Rg6+-)]
25.Re3 f5
 [25...e5 is still a small chance 26.Rg3+
 Kh8+-]
26.Rh3 Qe8 27.Be5+ Nf6
 [27...Kg6 cannot change what is in store for
 Black 28.Qe2 Nf6 29.Bxf6 Kxf6 30.Bxb7+-]
28.Qd2 Kf7
 [28...Qg6 does not save the day 29.Rg3
 Rbf7 30.Qe2+-]
29.Qg5 Diagram

(Diagram)

**Qe7 30.Bxf6 Qxf6 31.Rh7+ Ke8 32.Qxf6
 Rxh7**
 [32...Rxf6 does not improve anything 33.Bxb7
 Bxb7 34.Rxb7+-]
33.Bc6+ Diagram
 [33.Bc6+ Bd7 34.Qxe6+ Kd8 35.Qd6+-]

1-0

