

B85

☐ Lasker,Em

■ Pirc,V

[Deep Fritz 8 (15s)]

B85: Sicilian Scheveningen: 6 Be2 a6, lines with early Be3

1.e4 c5 2.Nf3 Nc6

[2...d6 3.d4 cxd4 4.Nxd4 Nf6 5.Nc3 e6 6.Be2]

3.d4 cxd4 4.Nxd4 Nf6 5.Nc3 d6 6.Be2 e6

7.0-0 a6

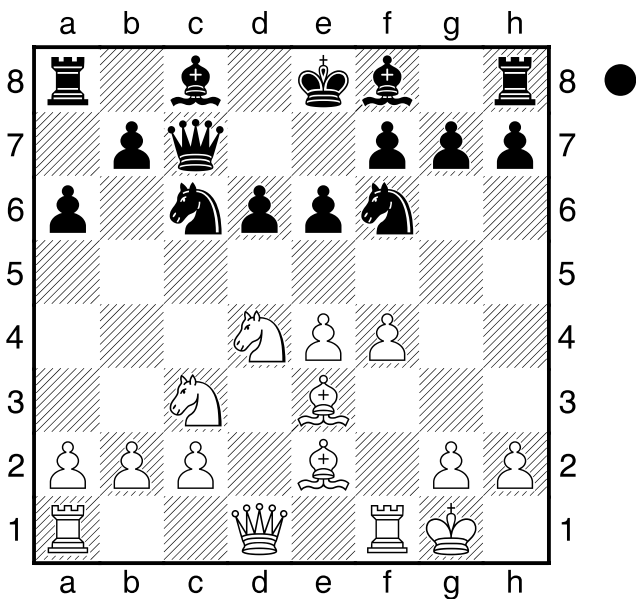
[7...Be7 8.Be3 0-0 9.f4 Bd7]

8.Be3

[8.Nxc6 bxc6 9.e5 dxe5 (9...Nd5 10.Nxd5 cxd5 11.Bf4 dxe5 12.Bxe5 f6 13.Bd4 Bd6) 10.Qxd8+ Kxd8]

[8.f4 Qb6 9.Be3 Qxb2 10.Na4 Qb4 11.c3 Qa5]

8...Qc7 9.f4 Diagram



Na5??

[9...Be7 10.Qe1 0-0 11.Rd1 Nxd4 12.Bxd4 b5 13.a3 Bb7 14.Bd3 Rac8]

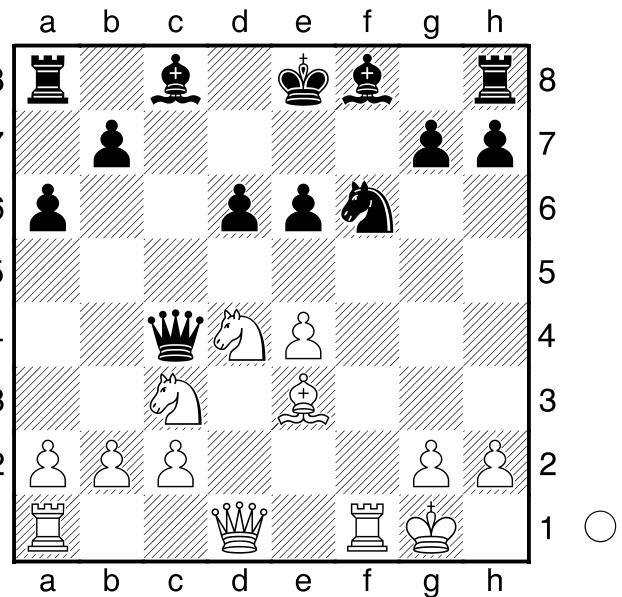
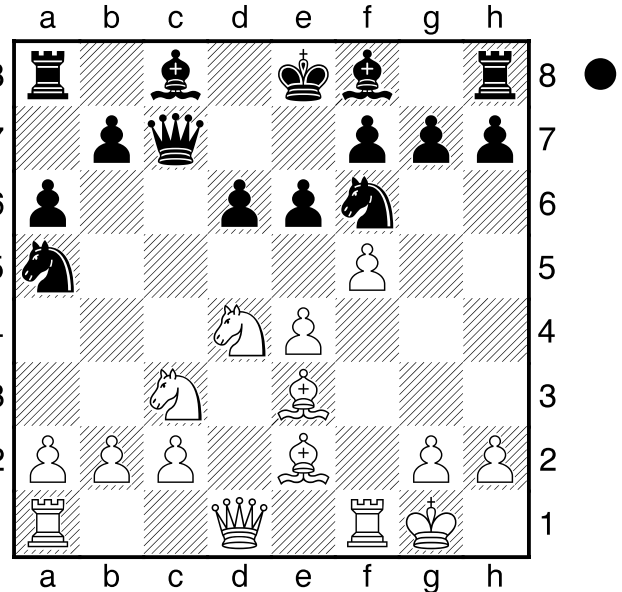
10.f5! Diagram

(Diagram)

Nc4? 11.Bxc4 Qxc4 12.fxe6 fxe6 Diagram

13.Rxf6 gxf6 14.Qh5+ Kd8 Diagram

[14...Ke7 15.Nf5+ exf5 (15...Kd7 16.Qf7+ Kc6 17.Qe8+) 16.Nd5+ Kd8 17.Bb6+ Kd7 18.Qf7+ Kc6 19.Qc7+ Kb5 20.a4+ Qxa4]



21.Nc3+ Kb4 22.Rxa4#]

[14...Kd7 15.Qf7+ Be7 16.Nf5 Re8

(16...exf5 17.Qxc4) 17.Nxd6 Kxd6

18.Qxe8 (18.Rd1+ Kc6 19.Qxe8+ Kc7

20.Qxe7+ Kc6 21.Qd6#)]

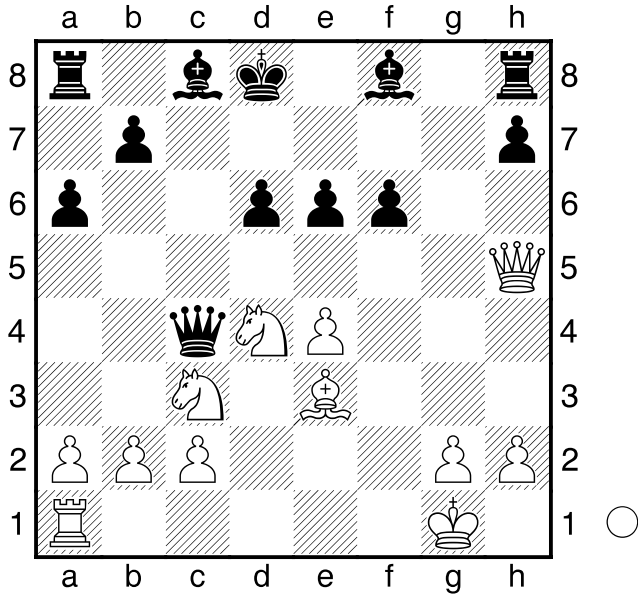
(Diagram)

15.Qf7 Bd7

[15...Be7 16.Nf5 Re8 17.Bb6+ (17.Nxd6 Bxd6 18.Bb6+ Bc7 19.Rd1+ Bd7

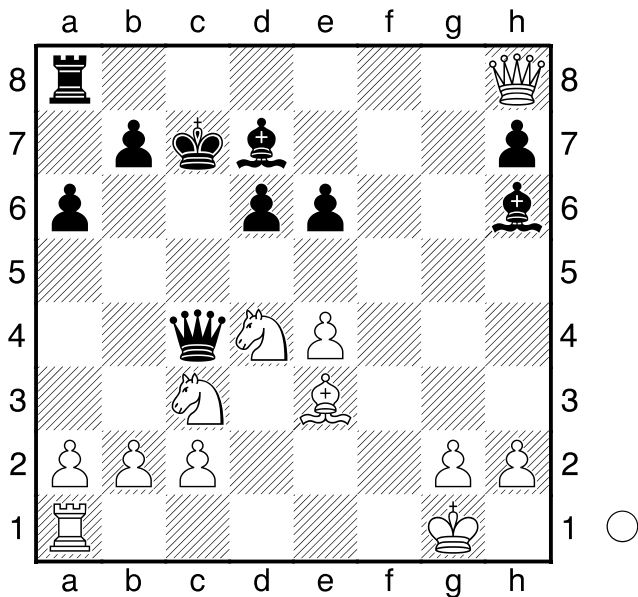
20.Qxd7#) 17...Kd7 18.Rd1 Kc6 (18...Qb4

19.Rxd6+ Qxd6 20.Nxd6 Kxd6 21.Qxe8)]



19.Rd4 (19.Qxe8+ Bd7 20.Nxe7+ Kxb6
21.Qxa8 ; 19.Rxd6+ Bxd6 20.Qc7+ Bxc7)
19...Qxd4+ 20.Bxd4 exf5 21.Qxe8+ Bd7
22.Qxa8]

16.Qxf6+ Kc7 17.Qxh8! Bh6 Diagram



18.Nxe6+

[18.Qxh7 Bxe3+ 19.Kh1 Bxd4]
[18.Bxh6 Rxh8]
[18.Qxa8 Bxe3+ 19.Kh1 Bc8 (19...Qxd4 ;
19...Bxd4) 20.Qa7 (20.Nde2) 20...Bxd4]

18...Qxe6

[18...Bxe6 19.Qxh7+ Bd7 20.Qxh6]

19.Qxa8

[19.Nd5+ Qxd5 20.Qxa8 Bxe3+ 21.Kh1

Qxe4]

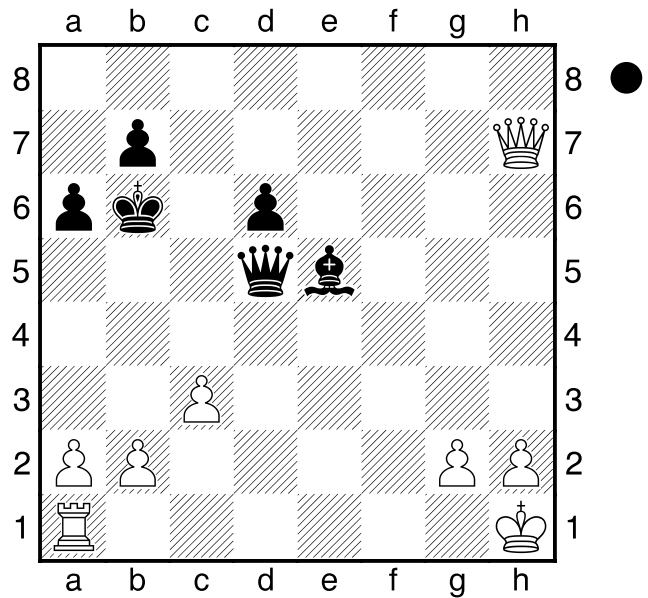
19...Bxe3+ 20.Kh1

[20.Kh1 Bc6 21.Qf8+-]

20...Bc6 21.Qf8 Bd4 22.Nd5+ Bxd5 23.exd5

Qxd5 24.c3 Be5 25.Qe7+ Kb6 26.Qxh7

Diagram



1-0