

A14

☐ Lev Polugaevsky

■ Petrosian

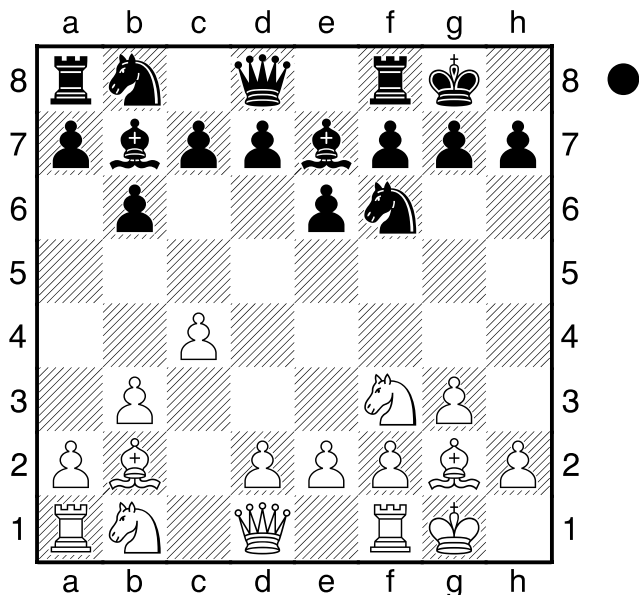
USSR Championship

[Coach Demetrius]

1970

A14: English Opening: 1...e6 with b3 by White

1.c4 Nf6 2.Nf3 e6 3.g3 b6 4.Bg2 Bb7 5.0-0 Be7 6.b3 0-0 7.Bb2 Diagram



d5 8.e3 [8.d4 dxc4 9.bxc4 c5] 8...c5 9.Nc3 [9.d4 Nbd7 10.Ne5 Qc7] 9...Nbd7 10.d3 Rc8 11.Qe2 Qc7 12.e4 [12.a3 a6 13.h3 Bd6 14.Nd2 Bc6] 12...d4 13.Nb1 [13.Nb5 Qb8 14.Na3 a6 15.Nc2 Qc7] 13...Ne8 14.Ne1 [14.Nbd2 e5] 14...e5 15.f4 g6 16.f5 Bg5 17.h4? [17.Nc2 Ng7] 17...Be3+ 18.Kh2 gxf5 19.exf5 Diagram

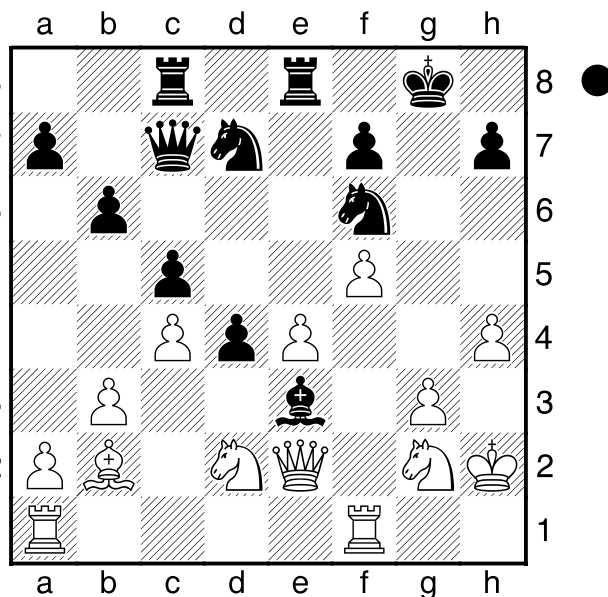
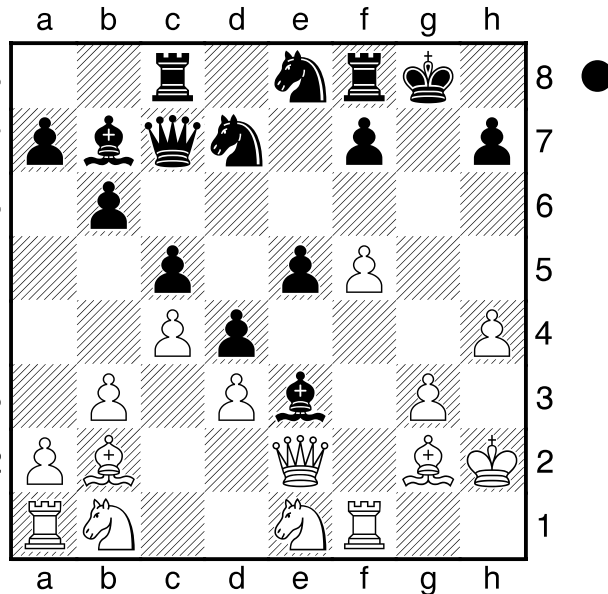
(Diagram)

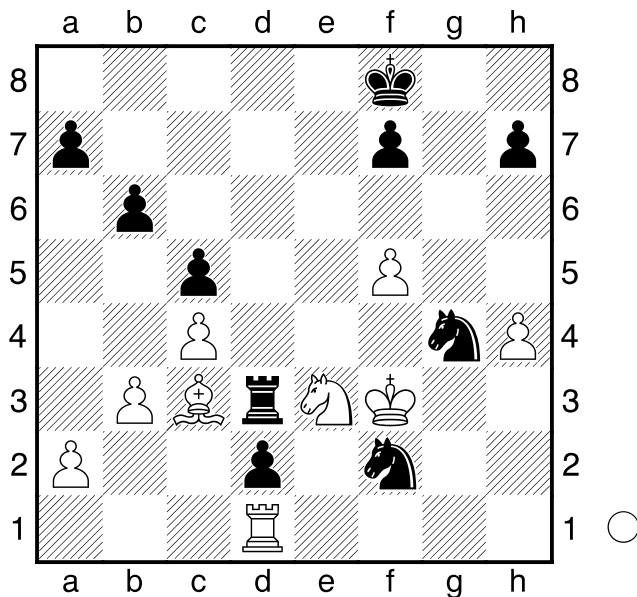
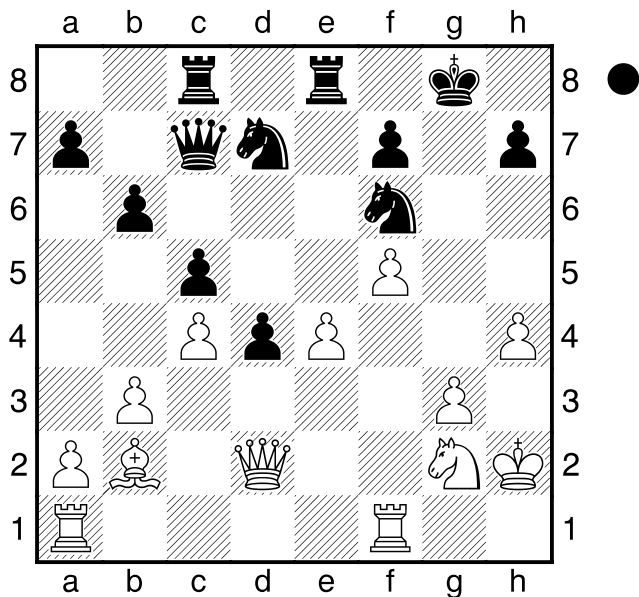
e4 20.Bxe4 [20.Nc2 Bh6 21.Bxe4 Bxe4 22.Qxe4 Nef6] 20...Bxe4 21.dxe4 Nef6 22.Ng2 Rfe8 23.Nd2 Diagram

(Diagram)

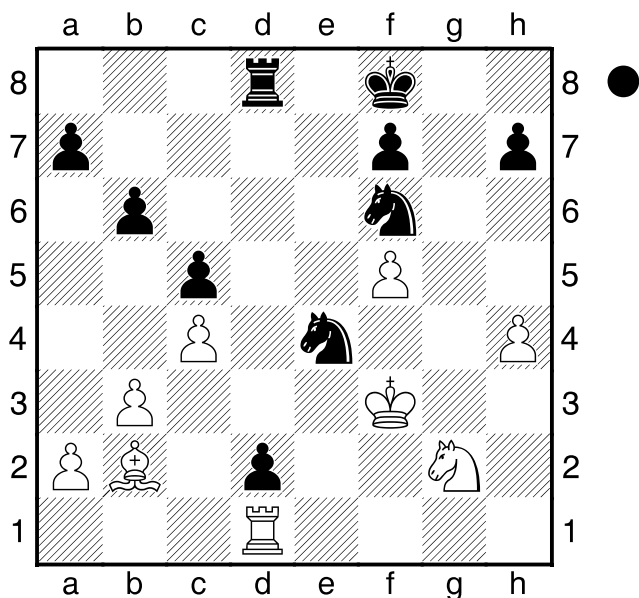
Bxd2 24.Qxd2 Diagram

Qxg3+! Demolishes the pawn shield. 25.Kxg3 Decoy theme: g3 Nxe4+ A double attack. 26.Kf4 Nxd2 27.Rfe1 [27.Rf2 Ne4 28.Re2 Nd6+] 27...Nf6 28.Rxe8+ [28.Bc1 Nde4+] 28...Rxe8 29.Re1 Nde4 30.Re2 Kf8 31.Kf3





d3 32.Re3 [32.Re1 Ng4 33.Nf4 Nd2+ 34.Kxg4 Rxe1 35.Nxd3 Rg1+ 36.Kf4 Rg2+]
32...Rd8 33.Re1 [33.Bxf6 d2 34.Bxd8 d1Q+ 35.Kxe4 Qd4+ 36.Kf3 Qxd8 37.h5-+] **33...d2**
34.Rd1 Diagram



Ng4!! a decisive sacrifice **35.Ne3** [35.Kxg4 A deflection Nf2 Theme: Double Attack]
35...Nef2 36.Bc3 [36.Ke2 no good, but what else? Re8 37.Kxd2 Nxe3 38.Rb1 Nxf5 39.Rf1 Ne4+ 40.Kc1-+] **36...Rd3** Diagram
 [36...Rd3 37.Rxd2 Rxe3+ (37...Nxe3 38.Rxd3 Nxd3 39.Kxe3) 38.Kf4 Rxc3-+]
0-1